

# **I-ENG-A® OF DALLAS TEXAS** *by DSE* **Professional Forensic Engineering**

**A MEMBER FIRM OF THE  
INVESTIGATIVE ENGINEERS ASSOCIATION**



- Asbestos & Chemical Exposure
- Indoor Air Quality
- Microbial/Mold Investigations
- Water Intrusion
- Hazardous Material Investigations

- Accident Reconstruction
- Slip & Fall Investigation
- Expert Witness Testimony
- Industrial Accidents
- Work Environment Issues

- Emergency Response
- Fires and Explosions
- Property & Structural
- Construction Defects
- Foundation Settlement



**I-ENG-A of Dallas Texas**  
**by DSE**  
**Professional Forensic Engineering**



1405 Chestnut Drive  
Rowlett, TX 75089  
Phone/Fax: (972) 412-8666  
Email: [dallastx@ienga.net](mailto:dallastx@ienga.net)  
[www.dallastx.ienga.net](http://www.dallastx.ienga.net) / [www.dsei.com](http://www.dsei.com)

# TABLE OF CONTENTS

MISSION STATEMENT	Pg. 3
CORPORATE PROFILE	Pg. 4
INTRODUCTION	Pg. 5
PROJECTS	Pg. 6
EXPERT TESTIMONY & LITIGATION SUPPORT	Pg. 7
INVESTIGATIVE ENGINEERS ASSOCIATION EXPERTISE	Pg. 8
APPROACH & PROCESS	Pg. 9
OUR POLICY IN CASE HANDLING	Pg. 10
RESUMES OF PROFESSIONAL ENGINEERS	Pg. 11-14
I-ENG-A NATIONAL CLIENTS LIST	Pg. 15
ORDER FORM	Pg. 16
RATE SHEET	Pg. 17
LICENSES & CERTIFICATIONS	Pg. 18
CERTIFICATE OF INSURANCE (FOR INFORMATIONAL PURPOSES ONLY)	Pg. 19-20
W-9 FORM	Pg. 21



***I-ENG-A® of Dallas Texas by DSE*** provides insurance and litigation clients with solutions to understand the cause and control costs of soaring claim settlements through knowledgeable and professional investigative support conducted by an experienced and diverse team of forensic experts.

## **Investigate - Educate - Resolve**

***I-ENG-A® of Dallas Texas by DSE*** was founded to provide the insurance claims industry and legal and other client representatives with a single source of contact for expertise and information relating to the practice of forensic engineering. It is the goal of the company and its associates to provide clear, concise and comprehensive information, findings and conclusions to claims adjusters, attorneys and risk management professionals in a professional, timely and cost-effective manner.

**DSE** is dedicated to providing professional engineering consulting services. Their clients benefit greatly from their dedicated team of strong and diverse staff of professional experts whose attention to detail and management skills lead to successfully completed, high-quality work.

### **Services:**

- Subrogation of Claims Review
- Causes and Origins with Scope/Design of Mitigation
- Environmental Causes and Consequences
- Post Incident Environmental Conditions/Mitigation
- Stormwater, Erosion and/or Flooding
- Water Damage/Infiltration
- Industrial Safety/Accidents
- Microbial/Mold Investigations/Clean-up
- Hazardous Chemical Spills and/or Site Investigations/Remediation
- Hazardous Building Materials/Chemicals Investigations/Abatement (Asbestos, Lead, Lead Paint, Mercury, PFAS, etc.)
- Indoor Air Quality
- Soil and Water Testing
- Laboratory Analyses
- Environmental Permitting/Violations
- Drinking Water/Waste Water System Design and Failures
- Post Incident Safety/Environmental Conditions/Mitigations

**DSE** has been on EPA's DISASTER Response Team for "Superfund Technical Assistance and Response Team-START", for Region 6 for 18 years.

**DSE** has also responded in Region 2 and 4 on dozens of major hurricane and tornados, the BP oil spill, forest fires and a dozen more of confidential responses such as: white powder, nerve gas, bomb threat, anthrax and others you may never have heard of and probably never will.

**I-ENG-A® of Dallas Texas by DSE**

**Phone/Fax:** (972) 412-8666

**Email:** [dallastx@ienga.net](mailto:dallastx@ienga.net)

[www.dallastx.ienga.net](http://www.dallastx.ienga.net) / [www.dsei.com](http://www.dsei.com)



**I-ENG-A® of Dallas Texas** is the forensic division of DSE. The firm is a member of the Investigative Engineers Association (I-ENG-A®). I-ENG-A® was founded in 1991 as the first association of forensic and investigative engineers doing business with the property and casualty insurance industries. Being a member of I-ENG-A allows the member firm to tap into forensic engineering resources regarding claims investigation. No single firm, no matter its size or how broad based its coverage, can possibly provide the level of service and combined resources that the national network of I-ENG-A can offer.

**I-ENG-A® of Dallas Texas** provides clients with unbiased, comprehensive and concise investigative reports formatted to allow the reader to grasp difficult technical concepts and visualize the reasoning to support the conclusions.

### Professional Engineering You Can Count On

**Dougherty Sprague Enterprises, Inc. (dse)** specializes in engineering, geological and environmental sciences including: site investigations, asbestos, mold, and lead-based paint surveys; subsurface soil and groundwater investigations, including aboveground (AST)/Underground Storage Tank (UST)/Leaking Petroleum Storage Tank (LPST), Inspection, Repair, Removal and Remediation; National Environmental Policy Act (NEPA) Consulting (Categorical Exclusions, Environmental Assessments, Environmental Impact Statements); Phase I & Phase II Environmental Site Assessments; Water, Stormwater, Wastewater, SWPPP; Remediation/Cleanups (specialty in sites impacted with chlorinated solvents and explosives); Emergency Response; Sustainability, and Compliance Solutions. Expert testimony has been provided to support attorneys and litigation. DSE also provides specialty services, such as remedial system design, and environmental training.

**DSE** is 100% owned and operated by, Cathy West Dougherty, PE, CRS, CAPM, MAC, President with over 40 years of mechanical and environmental engineering experience, and has managed DSE for over 20 years.

**DSE** is committed to achieving excellence through responsive and consistently satisfying service, and DSE is recognized for its superior business value. Through this commitment to your company, DSE stands ready to anticipate and meet the challenges of a constantly changing business climate. Looking to the future, DSE intends to provide services with integrity and quality, creating new solutions for projects of every size. Working side by side with you, we invite open dialog to enhance satisfactory project delivery.

**DSE** is a woman-owned/woman-operated firm and is certified as a Woman Owned Business (WBE) by the Women's Business Council-Southwest, certified as a State of Texas Historically Underutilized Business (HUB), certified as a Disadvantaged Business Enterprise (DBE) by the North Central Texas Regional Certification Agency.

With decades of person-years of experience specializing in engineering, geology and environmental science DSE provides specialty services such as: remedial system design; groundwater, fate and transport modeling; water and sewer system modeling, hydrology and hydrologic modeling, TCEQ-VCP/Brownfield Response Actions and Site Investigations; remedial system installation; environmental training; and drafting using AutoCAD®. DSE personnel have successfully worked on hundreds of environmental projects throughout Texas and the southwest, the U.S., Mexico and Canada. Expert testimony has been provided, as needed, to support attorneys and litigation.

I-ENG-A® of Dallas Texas by DSE

Phone/Fax: (972) 412-8666

Email: [dallastx@ienga.net](mailto:dallastx@ienga.net)

[www.dallastx.ienga.net](http://www.dallastx.ienga.net) / [www.dsei.com](http://www.dsei.com)





As an innovator in environmental and remediation services, Dougherty Sprague Enterprises, Inc. (**dse**) does more than meet the needs of clients today. Our goal is to anticipate tomorrow's challenges with proven methods, innovative technologies, and a turnkey approach. "Value-added" customer service is required in today's market place. By assisting our clients in gaining a competitive advantage in their business through environmental compliance and stewardship, we increase the bottom line. **dse** can also promote your competitive edge by minimizing potential regulatory liability originating from environmental issues. Offering competitive environmental advantage to your company, **dse** proposes to provide your firm with comprehensive environmental services to assist with diverse environmental needs. Our goal at **dse** is to address a broad range of environmental concerns with information and management services that will allow your company to resolve issues quickly, uniformly and economically.

**dse** was originally established as Dougherty Sprague Environmental, Inc., on March 3, 1998. In 2014, the firm became Dougherty Sprague Enterprises, Inc., to better address strategic growth and to offer additional services to our valued clients. Dougherty Sprague Enterprises, Inc., was originally established on August 22, 2002, and is now headquartered in Rowlett, Texas. We maintain a web presence at [www.dsei.com](http://www.dsei.com).

**dse** is best known for our comprehensive, yet cost effective, subsurface soil and groundwater investigations and remediation. We have extensive expertise in assessment and remediation of dry cleaners and sites with chlorinated solvent impacts of all types. We bring decades of experience in environmental issues of all types including UST removal, installation, investigation and corrective action. Our personnel are also experienced in industrial environmental compliance and permitting, indoor air quality, Phase I Environmental Site Assessments (ESAs) and

are certified to perform asbestos and lead-based paint surveys. We have recently expanded our capabilities to address water resources: planning and design for water, wastewater and surface water.

**dse** is committed to achieving excellence through responsive and consistently satisfying service, and **dse** is recognized for its superior business value. Through this commitment to your company, **dse** stands ready to anticipate and meet the challenges of a constantly changing business climate. Looking to the future, **dse** intends to provide services with integrity and quality, creating new solutions for projects of every size. Working side by side with you, we invite open dialog to enhance satisfactory project delivery.

With decades of person-years of experience specializing in engineering, geology and environmental science **dse** provides specialty services such as: remedial system design; groundwater, fate and transport modeling; water and sewer system modeling, hydrology and hydrologic modeling, TCEQ-VCP/ Brownfield Response Actions and Site Investigations; remedial system installation; environmental training; and drafting using AutoCAD®. **dse** personnel have successfully worked on hundreds of environmental projects throughout Texas and the southwest, the U.S., Mexico and Canada. Expert testimony has been provided, as needed, to support attorneys and litigation.

**dse** is a woman-owned/woman-operated firm and is certified as a Woman Owned Business (**WBE**) by the Women's Business Council-Southwest, certified as a State of Texas Historically Underutilized Business (**HUB**), certified as a Disadvantaged Business Enterprise (**DBE**) by the North Central Texas Regional Certification Agency, and holds a U.S. General Services Administration (**GSA**) Environmental Contract (GS-10F-0616P).

I-ENG-A® of Dallas Texas by DSE

Phone/Fax: (972) 412-8666

Email: [dallastx@ienga.net](mailto:dallastx@ienga.net)

[www.dallastx.ienga.net](http://www.dallastx.ienga.net) / [www.dsei.com](http://www.dsei.com)



**DSE** addresses the needs of private, public, and governmental clients by tailoring our services to the specific needs of our clients. **DSE** has experience in providing the following types of services:

- Phase I - Environmental Site Assessments
- Phase II - Environmental Site Assessments
- Phase III - Cleanup and Remediation
- Aboveground/Underground Storage Tank (AST/UST) Installation, Inspection, Repair, Removal and Remediation
- Voluntary Cleanup Program Closure/Innocent Landowner Protection
- Emergency Response Management
- Oil Pollution Act – Compliance Support
- National Environmental Protection Act (NEPA)
- Comprehensive Environmental Response, Compensation, and Liability Act (CERCLA)/Superfund Amendment and Reauthorization Act (SARA)
- Groundwater and Contaminant Transport Modeling
- Asbestos & Lead-Based Paint Inspections
- Mold and Air Quality Assessment
- Permitting, Planning, and Compliance Auditing
- Expert Testimony & Litigation Support
- Environmental, Health and Safety Training Services
- Water, Wastewater, Surface Water, Storm Water
- Sustainability and Green Initiatives



## EXPERT TESTIMONY & LITIGATION SUPPORT

**dse** has reviewed and investigated over 190 dry cleaner and chemical plant related cases. This involved reviewing the sites, reports, files and dozens of other cases involving the related impacts. Many of these cases involve remediation and remedial cost estimates; investigation and cleanup of impacts; indoor air quality, including commercial or residential carpet/interior assessments, asbestos, lead-based paint, and mold; environmental consulting industry practices, errors and omissions; chemical plant safety, and environmental safety and/or health standards.

### ***Dry Cleaner Spill, FRIENDSWOOD, TEXAS***

#### *Review and Litigation Support*

**dse** provided litigation support and expert testimony for over 15 years involving compliance auditing, regulatory compliance for a dry cleaner involving a perchloroethylene or tetrachloroethene (PCE) chemical spill and a personal injury lawsuit. This involved extensive review of documents, including operating manuals, personnel procedures, interrogatories, and depositions of witnesses. **dse** was also asked to perform site soil and groundwater sampling. The case was settled in mediation and remediation costs are currently the responsibility of the insurance agency. The site is currently in the Voluntary Cleanup Program (VCP) with the Texas Commission on Environmental Quality (TCEQ) and proceeding through assessment and closure.



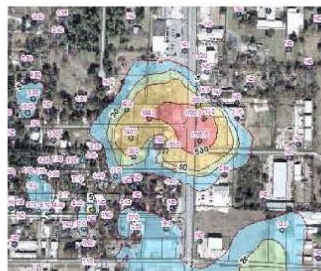
### ***Private Residence Mold Support, FAIRVIEW, TEXAS***

#### *Inspections and Litigation Support*

\$1.6 Million home with extensive mold damage and remediation. Conducted investigations, wrote protocols, worked closely with remediation, and issued Certificate of Mold remediation (CMDR) and is now supporting the client's legal actions with home inspections performed prior to home purchase.

### ***Jones Road Superfund Site, HOUSTON, TEXAS***

#### *Review and Litigation Support*



**PCE Plume**

**dse** provided litigation support in a lawsuit involving Bell Cleaners (Bell). This project was a TCEQ superfund site and is currently an EPA superfund site. **dse** was asked to testify on behalf of the manufacturer and provide document review and expert opinions. The opinions were to elaborate on the nature of the subsurface geology and hydrogeology beneath the site and the surrounding area in relation to an alleged release or releases of chlorinated dry-cleaning solvent by Bell, as well as the probability of other sources of a PCE release in the vicinity of the site.

I-ENG-A® of Dallas Texas by DSE

Phone/Fax: (972) 412-8666

Email: [dallastx@ienga.net](mailto:dallastx@ienga.net)

[www.dallastx.ienga.net](http://www.dallastx.ienga.net) / [www.dsei.com](http://www.dsei.com)



# INVESTIGATIVE ENGINEERS ASSOCIATION EXPERTISE

**I-ENG-A® of Dallas Texas by DSE** has the ability to draw from the diverse resources of the Investigative Engineers Association network of forensic engineering firms. Additional expertise, when needed, is available through I-ENG-A® of Dallas Texas by DSE in the following disciplines:

AISC Steel Erection	Ground Water/Storm Water	Risk Management/Risk Analysis
ANSI	Hazardous Waste and Nonhazardous	Road Construction
API	Waste	Road Geometrics
ASME	Health and Safety (CIH)	Roof Systems
ASTM	Heavy Equipment Failure Analysis	Safety Belt Usage
AWS	Gun Design	Sanitary
AWWA	High Voltage Transmission and Power	Security
Acoustic Emission	Generation (Commercial, Residential	Septic Failures
Analytical Chemistry	and Industrial)	Sick Building Syndrome
Architectural Design and Design Practic-	Highway and Work Zone Safety	Site Design
es	Household Appliances Fire Investigation	Slip and Fall Analysis
Asbestos	Human Factors (Accident Reconstruc-	Slope Stability
Biochemistry and Bioinstrumentation	tion)	Soils and Geologic Investigations
Blasting	HVAC Design	Sprinkler and Fire Suppression System
Bridges and Roadways	Hydraulics and Hydrology	Sprinkler Discharge
Burner Malfunctions	HVAC&R Mechanical Systems	SSPC Industrial Painting
Building and Land Surveying	Hydrogeology (Geologist)	Steel and Wood-framed
CERCLA RI/FS Investigations	Indoor Air Quality (CIH)	Support Structures
Building Codes and Contract Administra-	Industrial Power Systems	Storage Process Tank Inspectors
tion	Industrial Hygiene (Mold, Fungi, Bacte-	Storm Water
Chemical and Nuclear Waste Issues	ria)	Structural Engineering
Civil Engineering	Industrial Safety and Operation	Structural Fire Investigation
Computer Based Analytical Methods	Landfills	Surveying
Concrete Failures	ISO14001	Surveying Disputes
Construction Defects	Leaks	Tanks Testing Programs
Code Interpretation	Levees	Traffic Accident Reconstruction
Controls System Engineering and Con-	Lightning Damages/Determination	Traffic Accidents and Roadway Geomet-
struction	Liquid Penetrant	rics
Crane Collapse	Litigation Support	Traffic Law
Dams	Low Voltage Distribution Systems	Ultrasonic
Construction Practices and Safety	Machining and Machine Design	UST/AST
Design	Magnetic Particle	Utilities and Drainage
Dikes	Materials of Construction	Vehicle Fire Investigation
Drainage	Materials Science	Vehicular Mechanical Investigations
Earth Movement	Mechanical Design/Failure	Vessel and Pipe Rupture
Eddy-Current	Medical Instrument Design	Vibration
Electrical Controls and Failures	Micromachining and Instrument Analysis	Visibility Concepts
Electrical Fire Cause and Origin	Mining	Visual Testing
Electrical Injuries	Moisture Surveys (Roofs, EIFS, Floors)	Waste Water
Electrical Utility Power Systems	Mold Investigation	Water Management
Environmental	Mold Remediation Planning	Water Quality
Environmental Management and Reme-	NCE	Welded Fittings
diation	Oil and Gas	Wind Storm Damage
Failure Analysis (Mechanical/Civil)	Paving	Wind, Floor and Fire Damage Assess-
FDM-Confined Space Entry and Rescue	Pipelines	ments
Fire and Arson Investigation	Post Office- Multiple Design	Wood Trusses
Flooding/Flood Control	OHSA, ADA, Building Code Evaluations	Zoning and Planning
Fluid Handling Systems	Product Failure/Liability	
Footings	Project Management	
Foundation Failure	Radiographic	
Structural Analysis	Railroads	
Foundation Walls	RCRA Hazardous Waste	
Freeze-Ups	Recreation Centers	
Gas Explosions	Refrigeration Systems Design	
Geosynthesis	Regulatory Technician	
Geotechnical	Replacement Costs	
Grading Issues	Reservoirs	

**I-ENG-A® of Dallas Texas by DSE**

Phone/Fax: (972) 412-8666

Email: [dallastx@ienga.net](mailto:dallastx@ienga.net)

[www.dallastx.ienga.net](http://www.dallastx.ienga.net) / [www.dsei.com](http://www.dsei.com)



Our investigative services extend to clients in all areas of insurance, loss, and loss mitigation. Typically, an assignment begins with a phone call, letter, fax or email from a potential client. During the initial client interview process, we request certain specific information relating to the case. Items such as the following may be discussed:

- Type of loss
- Date of loss
- Name and address of Insured
- Name and address of Claimant, if different
- Policy number
- Claim Number
- Name and telephone number of contact person at Adjuster's Office
- Estimated value of claim
- General outline of policy coverage

**DSE**  
**has established an exceptional**  
**reputation for outstanding service**  
**by providing our clients with**  
**dedicated and skilled personnel**  
**committed to their work.**

Additionally, we solicit other general information that may be available:

- Any records and documents already obtained or available
- Any pertinent information in Adjuster's file
- Circumstances of this loss

If no records or documentation are available from a client or adjuster, we may choose to prepare additional requests for data, directly to the parties involved, their representatives, or any associated insurance providers always copying our client on the communications. Depending on the circumstances, we may also contact the parties involved to arrange an appointment and begin the forensic investigation at the location of damage, loss, or accident.

If the client has obtained records and documents, we will request that they be forwarded to us. After examination, we will consult with the client to agree on the plan for the investigation.



1. **I-ENG-A<sup>®</sup> of Dallas Texas by DSE** will hold an initial discussion with you (the client) at no charge to validate the need for a case assignment.
2. When you offer the assignment, and we accept the assignment, we mutually agree on the initial phase(s) of the investigation and acceptable hours/charges (or not to exceed).
3. As we complete each phase of the assignment, we will provide you an oral report. You provide us with one of the following directions:
  - a. You decide no further analysis is required, and authorize our final billing.
  - b. You decide the analysis is complete, direct us to submit a written report, and authorize our final billing with submission of the report.
  - c. You decide to continue with the next phase of the assignment.
4. If you decide to continue the assignment, you may expect the following:
  - a. You have authorized us to proceed; we will formally acknowledge the assignment, and submit a final bill for the analysis.
  - b. With the bill, we will submit additional time/charge estimate for completing the next phase of the assignment and an amount of the deposit required to begin the phase.
  - c. During the assignment, we will provide you verbal progress reports at least every two weeks, and submit monthly progress billing.
  - d. When we complete the assignment, we will provide a complete verbal report, which we will formalize in writing only upon your authorization to do so.
  - e. We will submit a written report (if you have authorized one) and a final billing.
5. We will provide you with timeliness and the services of qualified experts through our direct staff, our substantial resources and those of the Investigative Engineer's Association. We will handle our assignments in a cost effective manner leaving you in control at all times.



### Education

B.S. – Mechanical Engineering, The Ohio State University, 1981

MBA – Small Business, University of Texas, Austin. 1998

### Experience Summary

Total Experience: 39 yrs.  
Current Firm (dse): 18 yrs.  
Program Mgmt.: 18 yrs.  
LPST Management: 28 yrs.  
Emergency Response: 39 yrs.  
Remediation/Treat 28 yrs.

### Registrations/Licenses

Licensed Professional Engineer - Texas No. 76589

TCEQ LPST Corrective Action Project Manager - Texas No. CAPM00926

TDSHS Licensed Mold Assessor - Texas No. MAC1145

Certified Remediation Specialist, EAA

40-hour OSHA Health and Safety Training (29 CFR 1910.120)

Annual 8-hour OSHA Health and Safety Training Refresher (29 CFR 1910.120)

8-hour OSHA Site Manager and Supervisor Training (29 CFR 1910.120)

OSHA Incident Commander Training (29 CFR 1910.120)

FEMA Emergency Management Institute, IS-700, ICS-100, ICS-200 Trained

## Cathy W. Dougherty, PE, CRS, CAPM

### *PRESIDENT, PRINCIPAL ENGINEER, MOLD CONSULTANT*

Ms. Dougherty has 32 years of experience in environmental engineering in the supervision and management of technical personnel, including remedial design of systems for treatment of petroleum impacted soils and groundwater sites. She supervises/provides senior technical review for all engineering aspects of the projects, directs assessments, conducts regulatory interface, and reviews report elements of a reporting, oversees treatability tests, design and constructions of remediation systems and seals documents as appropriate. These sites have included commercial and industrial facilities, such as refineries, retail gas stations, auto-body service centers, as well as military bases and Superfund sites. Her employment history includes positions of increasingly higher responsibility in large, multi-national consulting and chemical manufacturing firms.

She provides senior technical leadership, review, and/or environmental project management for a broad range of environmental assessments. These assessments include: Phase I Environmental Site Assessments for property transaction risk screening; Phase II Site Investigations of petroleum underground storage tanks; subsurface hazardous contaminant investigation; and projects related to commercial real estate developments, chemical plants, refineries, bulk terminals, industrial facilities, waste treatment and disposal facilities. Many of these projects have required the direction and coordination of multi-site facilities, with geographically dispersed personnel and various subcontractors assigned to a large variety of tasks and diverse technical goals.

Ms. Dougherty's expertise includes:

- **Emergency Response Management and Spill Containment**– Ms. Dougherty has in-depth knowledge of regulations and permitting for waste reduction, RCRA, hazardous waste, general OSHA and worker safety, industrial hygiene and other air, wastewater, or solid waste handling and/or permitting compliance requirements. She also has over 39 years experience with emergency response management of chemical oil and gas spills and remediation.
- **Soil and Groundwater Remediation** – 15 years of her experience has specifically included wastewater and groundwater treatment and remediation. She has designed various cost effective, goal oriented remedial systems utilizing destructive, and/or stabilizing treatment technologies including the following treatment types: air stripping, tray-aeration, vapor extraction, air sparging, bioventing, in-situ bioremediation, land-farming, thermal desorption/incineration, granular activated carbon adsorption, surfactant soil washing, stabilization, etc.
- **NEPA and Planning** – Ms. Dougherty has been principle planner and engineer on NEPA document preparation, including Environmental Assessments (EAs), EISs, FONSI and Categorical Exclusions for Cities of Dallas, Fort Worth, Plano and Lancaster, TX, US General Services Administration (GSA), Federal Aviation Administration (FAA), and U.S. Navy (NAVFAC) planned construction projects.
- **Expert Testimony** –Ms. Dougherty has testified in 14 cases for private State and Federal cases involving property damages and/or claims involving chemical or petroleum-related product spills or impacts to soils and groundwater or surface water.

# John T. Dougherty, MAC

The logo for dse (Dougherty Sprague Enterprises) features the lowercase letters "dse" in a bold, blue, sans-serif font. The text is centered within a yellow rectangular box that has a thin blue border.

**Years with dse: 16**

**Years with other Firms: 27**

<b>Employment History</b>	<p>Senior Project Manager, Dougherty Sprague Enterprises, Inc. (<b>dse</b>), Dallas, Texas, October 2006 - present.</p> <p>The Vistawall Group. 1983 - 2006: Manufacturing Engineering Manager, Plant Engineer, Maintenance Manager</p>
<b>Education</b>	<p><b>Degree in Industrial Engineering</b>, The Ohio State University, Columbus, Ohio <b>Bachelor of Science</b>, Administration and Management Science with a double major in Economics. Carnegie-Mellon University, Pittsburgh, Pennsylvania</p>
<b>Licenses</b>	<p><b>Mold Assessment Consultant: TX #1900</b> <b>Lead Paint Inspector: TX</b></p>
<b>Professional Certification</b>	<p><b>40-hour OSHA Hazwoper,</b> <b>ISC-700 National Incident Management System (NIMS) FEMA</b> <b>Du Pont Safety Leadership</b> <b>Incident Lead Investigator Training Program</b> <b>Asbestos Inspector and Management Planner Course</b> <b>Wilderness First Aid</b></p>
<b>Professional Experience</b>	<p>Mr. Dougherty has over 41 years of project management including technical and general oversight of environmental, construction and manufacturing engineering projects and operating groups, project proposals and approvals, financial review, economic analysis and justification, cost estimating, budget management. Clients have included private, commercial, state, local, and federal</p>
<b>Environmental &amp; Safety Experience</b>	<p>He has developed, written, reviewed, updated, and presented safety programs, procedures, audits, inspections, accident/injury/fatality &amp; equipment failure investigations and reviews for contract, hourly, salaried, management and contractors in multiple facilities for local and nationwide operations.</p> <p>Personally conducted and/or managed investigations for mold, lead paint, and assisted with asbestos surveys for private, commercial, local, state, and federal facilities throughout the U.S.</p> <p>Conducted investigations and inspections of Aboveground and Underground Storage Tanks (AST, UST) for petroleum at multiple commercial, local, state, and federal facilities primarily in Texas. Developed and presented an AST Inspection Training Program for the Texas Military Department Environmental Team.</p> <p>Project Manager for multiple Phase II Environmental Site Assessments (<b>ESAs</b>) for sites through out Texas, New Mexico, and Montana. Activities included writing Health and Safety Plans (<b>HASP</b>), site safety, management and field supervision of employees, subcontractors, and laboratories, data analysis, report production, and client communications.</p> <p>Extensive background in stormwater compliance. Led teams conducting stormwater collection and monitoring, developed and wrote Construction and Facility SWPPPs as well as SPCC Plans, conducted TxDOT Stormwater Compliance Inspections.</p>





### Education

B.S. – Geosciences,  
Pennsylvania State  
University, 1981

MBA – Southern Methodist  
University, 1990

### Experience Summary:

Total Experience: 31 yrs.  
Current Firm (**dse**): 13 yrs.  
Geological Services: 30 yrs.  
LPST Management: 23 yrs.  
Site Investigation: 23 yrs.  
Project Management: 23 yrs.  
Asbestos Services: 10 yrs.  
Municipal Services: 23 yrs.

### Registrations/Licenses

Licensed Professional  
Geoscientist - Texas No. 39

TCEQ LPST Project Manager  
- Texas No. PM0000020

TDSHS Licensed Asbestos  
Individual Consultant - Texas  
No. 205485

40-hour OSHA Health and  
Safety Training (29 CFR  
1910.120)

Annual 8-hour OSHA Health  
and Safety Training Refresher  
(29 CFR 1910.120)

8-hour OSHA Site Manager  
and Supervisor Training (29  
CFR 1910.120)

FEMA Emergency  
Management Institute, IS-700  
Trained

## Paul W. Heidgerd, PG, CAPM, IAC

### SENIOR GEOLOGIST, ASBESTOS CONSULTANT

Mr. Heidgerd has more than 23 years of Project Management experience conducting and managing Phase I, II and III Environmental Site Assessments (ESAs), Environmental Audits and Asbestos Consulting Services for the public and private sectors. He manages asbestos consulting services for clients owning from one to more than 200 buildings. The services include: asbestos inspections, abatement specification writing, air monitoring and abatement project management. He supervises all geological aspects of the projects, directs geological fieldwork, reviews elements of a geological nature, oversees feasibility tests and seals documents as appropriate.

He has extensive experience in the assessment and remediation of leaking petroleum storage tanks, dry cleaners and chlorinated solvent impacted industrial sites, including designing and conducting waste, soil and groundwater sampling activities and the supervision of field crews. He is also experienced in negotiations with federal, state and local regulatory agencies for clients.

Mr. Heidgerd's expertise includes:

- **Asbestos Consulting/Specifications** – Mr. Heidgerd has performed asbestos inspections for educational, commercial, government and military clients. Asbestos inspections include visually inspecting all reasonably accessible areas to identify locations of suspect ACBMs, visually categorizing suspect asbestos containing materials into homogeneous groups, determining the friability and condition of the materials. Collecting bulk samples of materials from each homogeneous area, preparing renovation and demolition specifications, submitting the samples for analysis of asbestos content and writing reports of findings.
- **Phase I ESA** – He has conducted or assisted with more than one hundred Phase I ESAs in Texas on agricultural, commercial and industrial properties as well as undeveloped land. Phase I ESA of former automotive repair facility that identified five Recognized Environmental Conditions (RECs) including underground storage tanks, solvent use/disposal and spills. Designed, managed and documented Phase II of the property that investigated the identified RECs. Managed portfolio of fifty Phase I ESAs for a major financial institution. Sites ranged in size from less than one acre to more than 100 acres in a variety of commercial, industrial and vacant properties.
- **Phase II ESA** – Conducted dry cleaner assessments, chlorinated solvent investigations, LPST assessments, UST removals and compliance audits. He managed a Focused Phase II ESA prior to Texas A&M University System's purchase of an urban property. He also conducted environmental assessments of multiple dry cleaning sites and prepared and submitted Applications for Ranking for the TCEQ Dry Cleaner Remediation Program resulting in client's acceptance into the program and eventual sale of properties..
- **Phase III Remediation** – Soil Vapor Extraction (SVE) systems, Pump and Treat systems, Enhanced Monitored Natural Attenuation (EMNA) and Monitored Natural Attenuation (MNA)



# CHARLES W. SPRAGUE

**Environmental Project Manager | Senior Geologist | Adjunct Geology Professor**

**MS Level Educated Environmental Project Manager and licensed Senior Geologist**, with extensive experience in the environmental industry. Environmental consulting experience includes planning, budgeting, conducting, and managing Phase I, Phase II, and Phase III Environmental Site Assessments with an eye toward achieving client objectives at or under budget. These goals were achieved by oversight and management of professional staff, consultants, and vendors; and mentoring and training of junior level staff. Maintained relations with clients and regulatory agencies through excellent communications and project management.

## PROFESSIONAL EXPERIENCE

**Collin College, Wylie, Texas – Adjunct Geology Professor (Part-Time) / JAN 2022 – Present**

- Present lectures for Earth Science class and laboratory.

**Dougherty Sprague Enterprises, Inc., Dallas, Texas – Senior Geologist (Part-time) / SEP 2021 – Present**

- Conduct Phase II Due Diligence site assessments for financial and local commercial/real estate institutions.
- Reviewed technical reports and sealed for submittal to end clients and agencies.

**Intertek-PSI, Dallas, Texas – Senior Geologist / MAR 2021 – JUN 2021**

- Conducted Phase I and Phase II Due Diligence site assessments for financial and local commercial/real estate institutions.

**Wood Environment and Infrastructure Solutions, Inc., Dallas, Texas – Sr Geologist / DEC 2016 – FEB 2020**

- Program Manager of Phase I and Phase II Due Diligence site assessments for commercial, institutional, and governmental clients.
- Provided support to the geotechnical department by providing field support for geotechnical projects.

**Dougherty Sprague Enterprises, Inc., Dallas, Texas – Senior Geologist/Hydrogeologist / MAR 2008 – DEC 2016**

- Directed staff and planned, budgeted, and implemented Phase II and Phase III operations for commercial, institutional, and governmental entities entailing petroleum hydrocarbon, chlorinated solvent, metals, and pesticide releases.

## EDUCATION

**Master of Science: Geology**, University of Florida, Gainesville, Florida

**Bachelor of Science: Geology**, University of Florida, Gainesville, Florida

## LICENSES

**Licensed Professional Geoscientist**, PG 47, Texas

**Licensed Professional Geologist**, PG 1385, Tennessee

**Licensed Corrective Action Project Manager**, CAPM 0000543, Texas

## CERTIFICATIONS

**40-HR OSHA HAZWOPER**

**8-hr OSHA HAZWOPER Refresher** current

## PROFESSIONAL ASSOCIATIONS

**Geological Society of America**

**Association of Environmental and Engineering Geologists**

**National Ground Water Association** (Association of Ground Water Scientists and Engineers)



# NATIONAL CLIENTS LIST



The Investigative Engineers Association (I-ENG-A®) network has worked with most major insurance companies since its inception in 1991. Following is a list of many of the companies who have used our services. If you require further information, please email your request to [info@ienga.com](mailto:info@ienga.com).

AAA	Continental	Hamilton Farmers' Mutual	Parkway Insurance
Acuity, Inc.	Continental Western Group	Hanover Insurance Company	Peerless Insurance
Adjusters International	Corporate Claims Management	Harbin Adjusters	Pekin Insurance
Aetna	Corrick, Peter & Associates	Harleysville Insurance Company	Pilot Insurance
AIG Claims Services	Country Companies (CCI)	Hartford Ins. Group	Preferred Risk Mutual
Allied Group Insurance	Crawford & Company	Heritage	Prudential Insurance
Allstate Insurance Co.	Crawford & Company (Crum & Forster)	Home Insurance Co.	Prudential-LMI Commercial Insurance Co.
American Family Insurance	Cumberland Insurance Group	Hoosier Insurance	R. Ian Pepper Insurance Adjusters, Inc.
American Fire and Indemnity	Custard Insurance	Hubanks & Kendall, Inc.	RBT Adjusters, Inc.
American Hardware Insurance	Economical Mutual Ins. Co.	INA Insurance Co.	Republic Insurance Group
American Indemnity Group	EMC Insurance Company	Indiana Farmers Mutual	Royal Insurance
American States Insurance Company	Employers Mutual Insurance	Indiana Insurance	Safeco
Amerisure	Encompass Insurance	Island Insurance Companies	Sams & Associates
Ameriprise	Erie Insurance Group	ITT Hartford	Sazant, Grenier & Assoc.
Amherst, Inc.	Evans & Dixon	Kemper Insurance	Scheppers O'Brien
Amica	Excelsior Exchange	Lashley & Bear	Scottsdale Ins. Co.
Amica Mutual Ins. Co.	Farm Bureau	Law Offices of Cozen & O'Conner	St. Paul Fire & Marine
Anthem Insurance Company	Farmer's Home Mutual	Leamon Adjusting Co.	St. Paul/Travelers Insurance
Appalachian Claims Service ARM	Farmers Insurance Group	Lemars Mutual Insurance	Stivers & Powers
Armed Forces Insurance	Farmers Mutual of Nebraska	Liberty Mutual	State National Insurance
Associated Claims Service	Federated Mutual Insurance Co.	Lindsey Morden Claim Services, Inc.	Tessier & Associates/Halifax Ins.
Associates Insurance Adjusters	Fidelity National Insurance	LMI	The Shelby Insurance Group
Atlantic Mutual Insurance Co.	Fireman's Fund	Lyons, Brandt, Cook & Hiramatsu	The Hartford
Auto Owners Insurance	First Insurance Company of Hawaii	Markel Insurance Company of Canada	TIG Insurance Group
Bankers & Shippers	Francis, LaBrash, Quibell, & Associates	Maryland Casualty	TransAmerica (Now TIG)
Bierman-Condroy	Frontier Adjusters of Hawaii	Maryland Insurance Group	Travelers Insurance Co.
Bi-State Claims	GAB Business Services, Inc.	Meredith Adjusting Service	Travelers Property Casualty
Billings Adjusting Service	GAB Robins	Mid-Continent Casualty	Travelers
Boat US	Gallagher Bassett	Miller's Mutual Ins. Co.	UCIG
Buttner Associates	Garden City Claim Service	Morse, David & Associates	U.S.F. & G.
Cal Farm	Gay & Taylor	Motorists Insurance Co.	Underwriters Adjustment Bureau
Cannon Cochran Mgmt. Svcs, Inc.	General Accident	Motorists Mutual Insurance	United Fire Group
Canyon State Insurance	Germantown Mutual	MPI	USAA
Central Texas	Global Claims Service	MSI Insurance	Utah Home Fire Insurance
CNA Property Claims Division	Gore Insurance	National Interstate	Wausau Ins.
CGU	Goward, Inc.	Nationwide Insurance Co.	West Bend Mutual
Chrysler Insurance	Grange Mutual Casualty	Nixon & Company	Western National Assurance
Chubb Group	Grange Insurance Associates	Nodak Mutual Insurance Co.	Westfield Companies
Church Mutual Insurance	Great American Insurance	Northbrook Insurance	Zurich North American
Cincinnati Insurance Co.	Great Oaks Insurance Co.	Nova Casualty Company	ZC Sterling Insurance
CNA Insurance	Guardian Insurance	Ohio Casualty Group	
Columbia Insurance Company	Guide One Insurance	ORION NATIONAL	
Commercial Insurance	Halifax Insurance	Pacific Insurance Company	
Commercial Union Ins.			

I-ENG-A® of Dallas Texas by DSE

Phone/Fax: (972) 412-8666

Email: [dallastx@ienga.net](mailto:dallastx@ienga.net)

[www.dallastx.ienga.net](http://www.dallastx.ienga.net) / [www.dsei.com](http://www.dsei.com)



# ORDER FORM



There are several methods to order a claim investigation:

1. Complete this form and email to [dallastx@ienga.net](mailto:dallastx@ienga.net)
2. Call and place a verbal order at (972) 412-8666
3. Go to <http://www.ienga.net/assignment-form/>

Name: \_\_\_\_\_ Title: \_\_\_\_\_  
Company Name: \_\_\_\_\_  
Address: \_\_\_\_\_  
City: \_\_\_\_\_ State: \_\_\_\_\_ Zip: \_\_\_\_\_  
Email: \_\_\_\_\_ Phone: \_\_\_\_\_ Fax: \_\_\_\_\_  
Claim No \_\_\_\_\_ Date of Loss: \_\_\_\_\_

Your Client \_\_\_\_\_  
Adverse Party: \_\_\_\_\_  
Location of Occurrence: \_\_\_\_\_  
City: \_\_\_\_\_ State: \_\_\_\_\_ Zip: \_\_\_\_\_

Additional Instructions: \_\_\_\_\_  
\_\_\_\_\_  
\_\_\_\_\_  
\_\_\_\_\_  
\_\_\_\_\_  
\_\_\_\_\_

<input type="checkbox"/> Traffic Accident Reconstruction	<input type="checkbox"/> Property and Structural
<input type="checkbox"/> Construction Defect	<input type="checkbox"/> Mechanical and Electrical
<input type="checkbox"/> Personal Injury	<input type="checkbox"/> Fire and Arson Investigation
<input type="checkbox"/> Product Liability	<input type="checkbox"/> Cause and Origin

Other (Please Describe): \_\_\_\_\_  
\_\_\_\_\_  
\_\_\_\_\_  
\_\_\_\_\_

Completion Target Date: \_\_\_\_\_ Priority Level: Low Med High

## INVOICING INFORMATION:

Invoice To: \_\_\_\_\_  
Company Name: \_\_\_\_\_  
Address: \_\_\_\_\_  
City: \_\_\_\_\_ State: \_\_\_\_\_ Zip: \_\_\_\_\_  
Phone: \_\_\_\_\_

I-ENG-A® of Dallas Texas by DSE  
Phone/Fax: (972) 412-8666  
Email: [dallastx@ienga.net](mailto:dallastx@ienga.net)  
[www.dallastx.ienga.net](http://www.dallastx.ienga.net) / [www.dsei.com](http://www.dsei.com)



## HOURLY RATES

• Principal Engineers	\$ 300.00/hr
• Sr. Engineer/Project Manager	\$ 250.00/hr
• Engineer-In-Training	\$ 200.00/hr
• Sr. Geologist	\$ 200.00/hr
• Certified Industrial Hygienist	\$ 250.00/hr
• Field Technician	\$ 175.00/hr
• Depositions & Court	\$ 450.00/hr
• Construction Consultant	\$ 200.00/hr
• CAD Draftsman	\$ 100.00/hr
• Clerical Support	\$ 50.00/hr
• Asbestos/Mold Consultant	\$ 200.00/hr

## EXPENSES

• Consultants	Invoice Cost + 20%
• Shipping	Invoice Cost + 10%
• Laboratory Analysis	Invoice Cost + 20%
• Mileage	\$0.65/per mile or current Federal IRS allowance
• Large Evidence	\$200 pick-up/\$75 per month storage
• Small Evidence	\$100 pick-up/\$25 per month storage
• Miscellaneous Office & Reproduction	Invoice Cost + 10%

**DSE is licensed and certified by the following agencies and organizations:**

- North Central Texas Regional Certification Agency (NCTRCA)
  - ⇒ Disadvantaged Business Enterprise Certification
  - ⇒ Small Business Enterprise Certification
  - ⇒ Woman Owned Business Enterprise Certification
- State of Texas
  - ⇒ Historically Underutilized Business Certification
- Women's Business Council
  - ⇒ Southwest Certification
- Texas Board of Professional Engineers
  - ⇒ Professional Engineering Consulting Firm
- Texas Department of State Health Services (TDSHS)
  - ⇒ Asbestos Consultant Agency
- Texas Commission on Environmental Quality
  - ⇒ LPST Corrective Action Specialist Certification
- Texas Department of Licensing & Regulations (TDLR)
  - ⇒ Mold Consultant Agency



# CERTIFICATE OF LIABILITY INSURANCE

DATE (MM/DD/YYYY)

9/14/2022

THIS CERTIFICATE IS ISSUED AS A MATTER OF INFORMATION ONLY AND CONFERS NO RIGHTS UPON THE CERTIFICATE HOLDER. THIS CERTIFICATE DOES NOT AFFIRMATIVELY OR NEGATIVELY AMEND, EXTEND OR ALTER THE COVERAGE AFFORDED BY THE POLICIES BELOW. THIS CERTIFICATE OF INSURANCE DOES NOT CONSTITUTE A CONTRACT BETWEEN THE ISSUING INSURER(S), AUTHORIZED REPRESENTATIVE OR PRODUCER, AND THE CERTIFICATE HOLDER.

IMPORTANT: If the certificate holder is an ADDITIONAL INSURED, the policy(ies) must be endorsed. If SUBROGATION IS WAIVED, subject to the terms and conditions of the policy, certain policies may require an endorsement. A statement on this certificate does not confer rights to the certificate holder in lieu of such endorsement(s).

PRODUCER TEI Insurance Agency, Inc. P. O. Box 850746  Mesquite TX 75185-0746	CONTACT NAME: Angela Barron PHONE (A/C, No, Ext): (800) 727-7124 FAX (A/C, No): (972) 288-2608 E-MAIL ADDRESS: angela@teiinsurance.com
INSURED Dougherty Sprague Enterprises, Inc. PO Box 584  Rowlett TX 75030	INSURER(S) AFFORDING COVERAGE INSURER A: Admiral Insurance Company INSURER B: Texas Mutual Ins. Co. INSURER C: INSURER D: INSURER E: INSURER F:

## COVERAGES

CERTIFICATE NUMBER: CL2291412829

REVISION NUMBER:

THIS IS TO CERTIFY THAT THE POLICIES OF INSURANCE LISTED BELOW HAVE BEEN ISSUED TO THE INSURED NAMED ABOVE FOR THE POLICY PERIOD INDICATED. NOTWITHSTANDING ANY REQUIREMENT, TERM OR CONDITION OF ANY CONTRACT OR OTHER DOCUMENT WITH RESPECT TO WHICH THIS CERTIFICATE MAY BE ISSUED OR MAY PERTAIN, THE INSURANCE AFFORDED BY THE POLICIES DESCRIBED HEREIN IS SUBJECT TO ALL THE TERMS, EXCLUSIONS AND CONDITIONS OF SUCH POLICIES. LIMITS SHOWN MAY HAVE BEEN REDUCED BY PAID CLAIMS.

INSR LTR	TYPE OF INSURANCE	ADDL INSD	SUBR WVD	POLICY NUMBER	POLICY EFF (MM/DD/YYYY)	POLICY EXP (MM/DD/YYYY)	LIMITS
A	<input checked="" type="checkbox"/> COMMERCIAL GENERAL LIABILITY <input type="checkbox"/> CLAIMS-MADE <input checked="" type="checkbox"/> OCCUR  GEN'L AGGREGATE LIMIT APPLIES PER: <input checked="" type="checkbox"/> POLICY <input type="checkbox"/> PRO-JECT <input type="checkbox"/> LOC OTHER:			FEI-ECC-17755-09	9/15/2022	9/15/2023	EACH OCCURRENCE \$ 2,000,000 DAMAGE TO RENTED PREMISES (Ea occurrence) \$ 50,000 MED EXP (Any one person) \$ 5,000 PERSONAL & ADV INJURY \$ 2,000,000 GENERAL AGGREGATE \$ 2,000,000 PRODUCTS - COMP/OP AGG \$ 2,000,000 \$
A	AUTOMOBILE LIABILITY <input type="checkbox"/> ANY AUTO <input type="checkbox"/> ALL OWNED AUTOS <input checked="" type="checkbox"/> HIRED AUTOS <input type="checkbox"/> SCHEDULED AUTOS <input checked="" type="checkbox"/> NON-OWNED AUTOS			FEI-ECC-17755-09	9/15/2022	9/15/2023	COMBINED SINGLE LIMIT (Ea accident) \$ 1,000,000 BODILY INJURY (Per person) \$ BODILY INJURY (Per accident) \$ PROPERTY DAMAGE (Per accident) \$ \$
	UMBRELLA LIAB EXCESS LIAB DED RETENTION \$						EACH OCCURRENCE \$ AGGREGATE \$ \$
B	WORKERS COMPENSATION AND EMPLOYERS' LIABILITY ANY PROPRIETOR/PARTNER/EXECUTIVE OFFICER/MEMBER EXCLUDED? (Mandatory in NH) If yes, describe under DESCRIPTION OF OPERATIONS below	Y/N N	N/A	0002027243	2/12/2022	2/12/2023	<input checked="" type="checkbox"/> PER STATUTE <input type="checkbox"/> OTH-ER E.L. EACH ACCIDENT \$ 1,000,000 E.L. DISEASE - EA EMPLOYEE \$ 1,000,000 E.L. DISEASE - POLICY LIMIT \$ 1,000,000
A	Professional Liability			FEI-ECC-17755-09	9/15/2022	9/15/2023	Per occurrence \$2,000,000
A	Pollution Liability			FEI-ECC-17755-09	9/15/2022	9/15/2023	Aggregate \$2,000,000

DESCRIPTION OF OPERATIONS / LOCATIONS / VEHICLES (ACORD 101, Additional Remarks Schedule, may be attached if more space is required)

## CERTIFICATE HOLDER

## CANCELLATION

For Information Purposes Only

SHOULD ANY OF THE ABOVE DESCRIBED POLICIES BE CANCELLED BEFORE THE EXPIRATION DATE THEREOF, NOTICE WILL BE DELIVERED IN ACCORDANCE WITH THE POLICY PROVISIONS.

AUTHORIZED REPRESENTATIVE

Bret Jones/ASB

© 1988-2014 ACORD CORPORATION. All rights reserved.





# CERTIFICATE OF LIABILITY INSURANCE

DATE (MM/DD/YYYY)

1/6/2022

THIS CERTIFICATE IS ISSUED AS A MATTER OF INFORMATION ONLY AND CONFERS NO RIGHTS UPON THE CERTIFICATE HOLDER. THIS CERTIFICATE DOES NOT AFFIRMATIVELY OR NEGATIVELY AMEND, EXTEND OR ALTER THE COVERAGE AFFORDED BY THE POLICIES BELOW. THIS CERTIFICATE OF INSURANCE DOES NOT CONSTITUTE A CONTRACT BETWEEN THE ISSUING INSURER(S), AUTHORIZED REPRESENTATIVE OR PRODUCER, AND THE CERTIFICATE HOLDER.

IMPORTANT: If the certificate holder is an ADDITIONAL INSURED, the policy(ies) must be endorsed. If SUBROGATION IS WAIVED, subject to the terms and conditions of the policy, certain policies may require an endorsement. A statement on this certificate does not confer rights to the certificate holder in lieu of such endorsement(s).

PRODUCER	CONTACT NAME: Angela Barron
TEI Insurance Agency, Inc.	PHONE (A/C, No, Ext): (800) 727-7124 FAX (A/C, No): (972) 288-2608
P. O. Box 850746	E-MAIL ADDRESS: angela@teiinsurance.com
Mesquite TX 75185-0746	INSURER(S) AFFORDING COVERAGE NAIC #
INSURED	INSURER A: Admiral Insurance Company
Dougherty Sprague Enterprises, Inc.	INSURER B: Texas Mutual Ins. Co.
PO Box 584	INSURER C:
Rowlett TX 75030	INSURER D:
	INSURER E:
	INSURER F:

## COVERAGES

CERTIFICATE NUMBER: CL2291412829

REVISION NUMBER:

THIS IS TO CERTIFY THAT THE POLICIES OF INSURANCE LISTED BELOW HAVE BEEN ISSUED TO THE INSURED NAMED ABOVE FOR THE POLICY PERIOD INDICATED. NOTWITHSTANDING ANY REQUIREMENT, TERM OR CONDITION OF ANY CONTRACT OR OTHER DOCUMENT WITH RESPECT TO WHICH THIS CERTIFICATE MAY BE ISSUED OR MAY PERTAIN, THE INSURANCE AFFORDED BY THE POLICIES DESCRIBED HEREIN IS SUBJECT TO ALL THE TERMS, EXCLUSIONS AND CONDITIONS OF SUCH POLICIES. LIMITS SHOWN MAY HAVE BEEN REDUCED BY PAID CLAIMS.

INSR LTR	TYPE OF INSURANCE	ADDL INSD	SUBR WVD	POLICY NUMBER	POLICY EFF (MM/DD/YYYY)	POLICY EXP (MM/DD/YYYY)	LIMITS
A	<input checked="" type="checkbox"/> COMMERCIAL GENERAL LIABILITY <input type="checkbox"/> CLAIMS-MADE <input checked="" type="checkbox"/> OCCUR  GEN'L AGGREGATE LIMIT APPLIES PER: <input checked="" type="checkbox"/> POLICY <input type="checkbox"/> PRO-JECT <input type="checkbox"/> LOC <input type="checkbox"/> OTHER:			FEI-ECC-17755-09	9/15/2022	9/15/2023	EACH OCCURRENCE \$ 2,000,000 DAMAGE TO RENTED PREMISES (Ea occurrence) \$ 50,000 MED EXP (Any one person) \$ 5,000 PERSONAL & ADV INJURY \$ 2,000,000 GENERAL AGGREGATE \$ 2,000,000 PRODUCTS - COMP/OP AGG \$ 2,000,000 \$
A	AUTOMOBILE LIABILITY <input type="checkbox"/> ANY AUTO <input type="checkbox"/> ALL OWNED AUTOS <input checked="" type="checkbox"/> HIRED AUTOS <input type="checkbox"/> SCHEDULED AUTOS <input checked="" type="checkbox"/> NON-OWNED AUTOS			FEI-ECC-17755-09	9/15/2022	9/15/2023	COMBINED SINGLE LIMIT (Ea accident) \$ 1,000,000 BODILY INJURY (Per person) \$ BODILY INJURY (Per accident) \$ PROPERTY DAMAGE (Per accident) \$ \$
A	<input checked="" type="checkbox"/> UMBRELLA LIAB <input checked="" type="checkbox"/> OCCUR <input type="checkbox"/> EXCESS LIAB <input type="checkbox"/> CLAIMS-MADE <input type="checkbox"/> DED <input type="checkbox"/> RETENTION \$			FEI-EXS-45071-01	10/04/2022	9/15/2023	EACH OCCURRENCE \$ 5,000,000 AGGREGATE \$ 5,000,000 \$
B	WORKERS COMPENSATION AND EMPLOYERS' LIABILITY ANY PROPRIETOR/PARTNER/EXECUTIVE OFFICER/MEMBER EXCLUDED? (Mandatory in NH) If yes, describe under DESCRIPTION OF OPERATIONS below	Y/N <input checked="" type="checkbox"/> N	N/A	0002027243	2/12/2022	2/12/2023	<input checked="" type="checkbox"/> PER STATUTE <input type="checkbox"/> OTH-ER E.L. EACH ACCIDENT \$ 1,000,000 E.L. DISEASE - EA EMPLOYEE \$ 1,000,000 E.L. DISEASE - POLICY LIMIT \$ 1,000,000
A	Professional Liability			FEI-ECC-17755-09	9/15/2022	9/15/2023	Per occurrence \$2,000,000
A	Pollution Liability			FEI-ECC-17755-09	9/15/2022	9/15/2023	Aggregate \$2,000,000

DESCRIPTION OF OPERATIONS / LOCATIONS / VEHICLES (ACORD 101, Additional Remarks Schedule, may be attached if more space is required)

## CERTIFICATE HOLDER

## CANCELLATION

For Information Purposes Only

SHOULD ANY OF THE ABOVE DESCRIBED POLICIES BE CANCELLED BEFORE THE EXPIRATION DATE THEREOF, NOTICE WILL BE DELIVERED IN ACCORDANCE WITH THE POLICY PROVISIONS.

AUTHORIZED REPRESENTATIVE

Bret Jones/ASB

© 1988-2014 ACORD CORPORATION. All rights reserved.

ACORD 25 (2014/01)  
INS025 (201401)

The ACORD name and logo are registered marks of ACORD

## Request for Taxpayer Identification Number and Certification

► Go to [www.irs.gov/FormW9](http://www.irs.gov/FormW9) for instructions and the latest information.

Give Form to the  
requester. Do not  
send to the IRS.

Print or type. See Specific Instructions on page 3.	<b>1</b> Name (as shown on your income tax return). Name is required on this line; do not leave this line blank. <b>Dougherty Sprague Enterprises, Inc.</b>	
	<b>2</b> Business name/disregarded entity name, if different from above	
	<b>3</b> Check appropriate box for federal tax classification of the person whose name is entered on line 1. Check only <b>one</b> of the following seven boxes.  <input type="checkbox"/> Individual/sole proprietor or single-member LLC <input checked="" type="checkbox"/> C Corporation <input type="checkbox"/> S Corporation <input type="checkbox"/> Partnership <input type="checkbox"/> Trust/estate  <input type="checkbox"/> Limited liability company. Enter the tax classification (C=C corporation, S=S corporation, P=Partnership) ► <b>Note:</b> Check the appropriate box in the line above for the tax classification of the single-member owner. Do not check LLC if the LLC is classified as a single-member LLC that is disregarded from the owner unless the owner of the LLC is another LLC that is <b>not</b> disregarded from the owner for U.S. federal tax purposes. Otherwise, a single-member LLC that is disregarded from the owner should check the appropriate box for the tax classification of its owner.  <input type="checkbox"/> Other (see instructions) ►	<b>4</b> Exemptions (codes apply only to certain entities, not individuals; see instructions on page 3):  Exempt payee code (if any) _____  Exemption from FATCA reporting code (if any) _____  <small>(Applies to accounts maintained outside the U.S.)</small>
	<b>5</b> Address (number, street, and apt. or suite no.) See instructions. <b>P.O. Box 584</b>	Requester's name and address (optional)
	<b>6</b> City, state, and ZIP code <b>Rowlett, TX 75030-0584</b>	
	<b>7</b> List account number(s) here (optional)	

### Part I Taxpayer Identification Number (TIN)

Enter your TIN in the appropriate box. The TIN provided must match the name given on line 1 to avoid backup withholding. For individuals, this is generally your social security number (SSN). However, for a resident alien, sole proprietor, or disregarded entity, see the instructions for Part I, later. For other entities, it is your employer identification number (EIN). If you do not have a number, see *How to get a TIN*, later.

**Note:** If the account is in more than one name, see the instructions for line 1. Also see *What Name and Number To Give the Requester* for guidelines on whose number to enter.

Social security number								
			-					
or								
Employer identification number								
0	6	-	1	6	5	1	1	6 2

### Part II Certification

Under penalties of perjury, I certify that:

- The number shown on this form is my correct taxpayer identification number (or I am waiting for a number to be issued to me); and
- I am not subject to backup withholding because: (a) I am exempt from backup withholding, or (b) I have not been notified by the Internal Revenue Service (IRS) that I am subject to backup withholding as a result of a failure to report all interest or dividends, or (c) the IRS has notified me that I am no longer subject to backup withholding; and
- I am a U.S. citizen or other U.S. person (defined below); and
- The FATCA code(s) entered on this form (if any) indicating that I am exempt from FATCA reporting is correct.

**Certification instructions.** You must cross out item 2 above if you have been notified by the IRS that you are currently subject to backup withholding because you have failed to report all interest and dividends on your tax return. For real estate transactions, item 2 does not apply. For mortgage interest paid, acquisition or abandonment of secured property, cancellation of debt, contributions to an individual retirement arrangement (IRA), and generally, payments other than interest and dividends, you are not required to sign the certification, but you must provide your correct TIN. See the instructions for Part II, later.

<b>Sign Here</b>	Signature of U.S. person ► 	Date ► <b>1-3-2022</b>
------------------	--	------------------------

### General Instructions

Section references are to the Internal Revenue Code unless otherwise noted.

**Future developments.** For the latest information about developments related to Form W-9 and its instructions, such as legislation enacted after they were published, go to [www.irs.gov/FormW9](http://www.irs.gov/FormW9).

### Purpose of Form

An individual or entity (Form W-9 requester) who is required to file an information return with the IRS must obtain your correct taxpayer identification number (TIN) which may be your social security number (SSN), individual taxpayer identification number (ITIN), adoption taxpayer identification number (ATIN), or employer identification number (EIN), to report on an information return the amount paid to you, or other amount reportable on an information return. Examples of information returns include, but are not limited to, the following.

- Form 1099-INT (interest earned or paid)

- Form 1099-DIV (dividends, including those from stocks or mutual funds)
  - Form 1099-MISC (various types of income, prizes, awards, or gross proceeds)
  - Form 1099-B (stock or mutual fund sales and certain other transactions by brokers)
  - Form 1099-S (proceeds from real estate transactions)
  - Form 1099-K (merchant card and third party network transactions)
  - Form 1098 (home mortgage interest), 1098-E (student loan interest), 1098-T (tuition)
  - Form 1099-C (canceled debt)
  - Form 1099-A (acquisition or abandonment of secured property)
- Use Form W-9 only if you are a U.S. person (including a resident alien), to provide your correct TIN.

*If you do not return Form W-9 to the requester with a TIN, you might be subject to backup withholding. See What is backup withholding, later.*